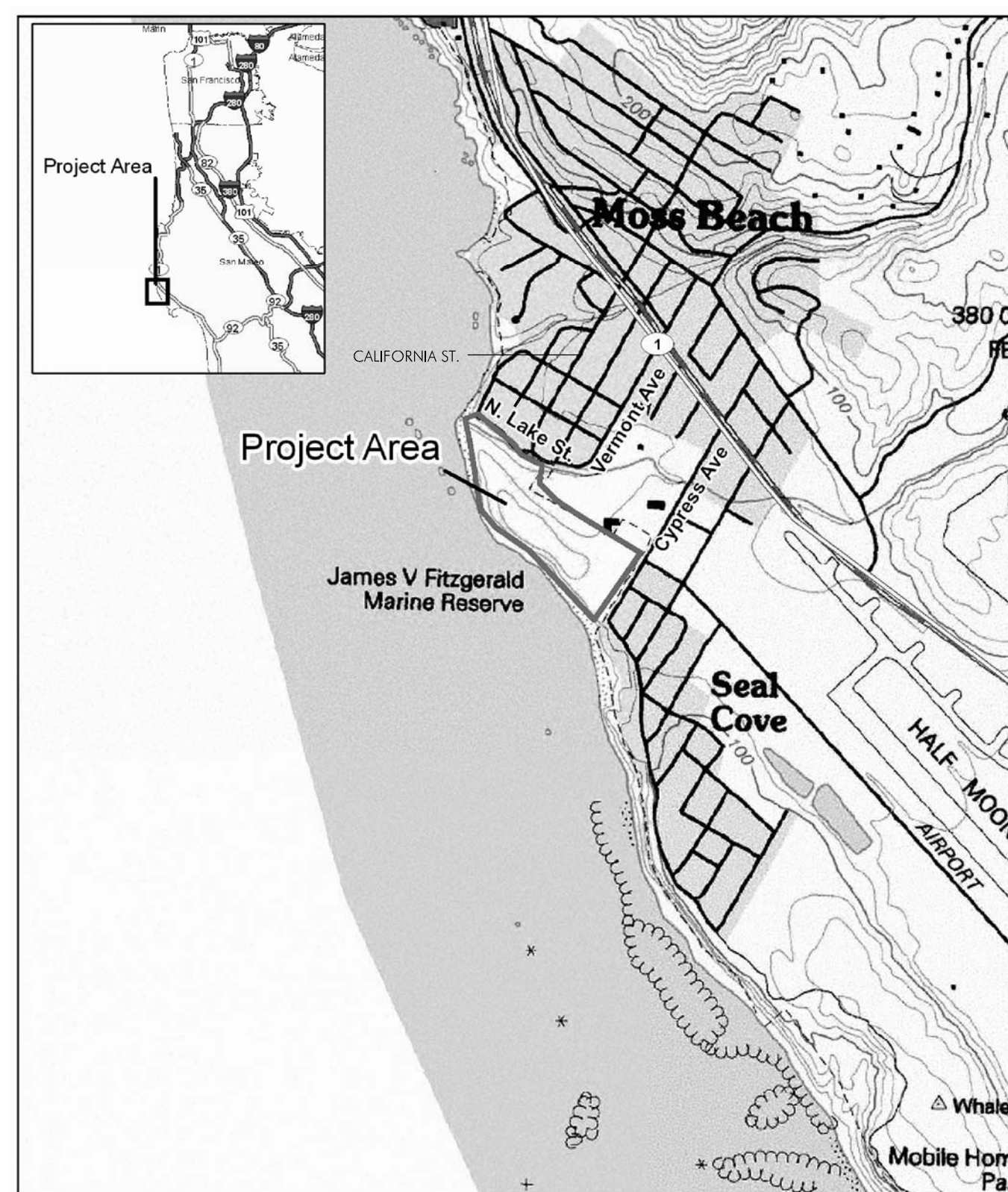


FITZGERALD MARINE RESERVE

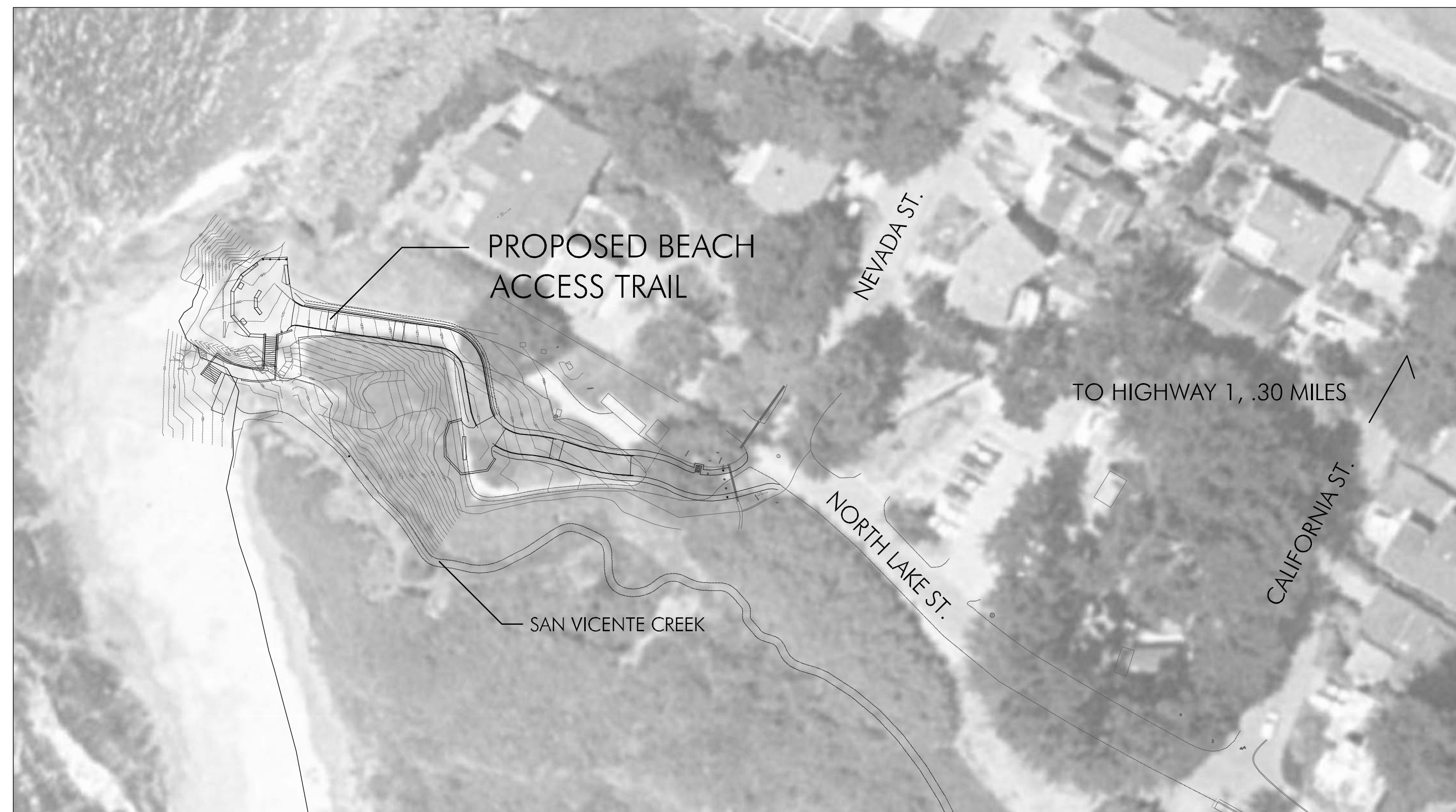
BEACH ACCESS

MOSS BEACH, CALIFORNIA

LOCATION MAP



SITE MAP

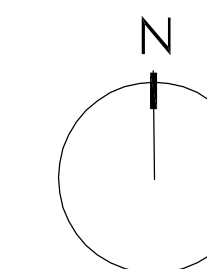


SCALE: 1:50

01/15/10 60% DRAFT CONSTRUCTION SET
 Date Issues And Revisions No.

PROJECT #18054
 DRAWN BY: ICM
 CHECKED BY: GJS
 ORIGINAL DRAWING SIZE: 24 X 36

SCALE: AS INDICATED



SHEET INDEX

Sheet

L-1

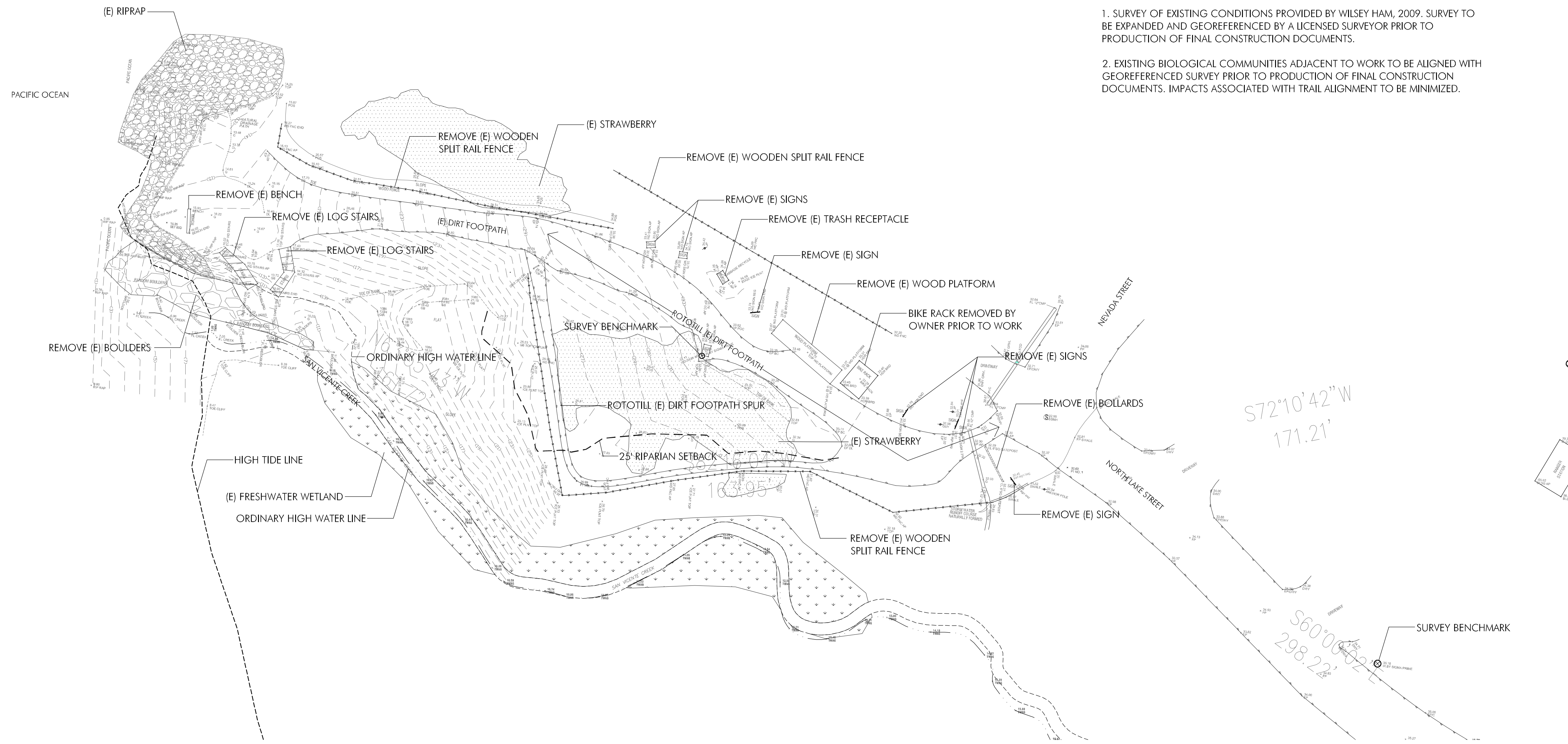
SHEET INDEX

- L-1 --- SHEET INDEX
- L-2 --- EXISTING CONDITIONS AND DEMOLITION PLAN
- L-3 --- SITE AND LAYOUT PLAN
- L-4 --- GRADING AND EROSION CONTROL PLAN
- L-5 --- STRUCTURAL AND SITE DETAILS
- L-6 --- SITE DETAILS

**FITZGERALD
MARINE RESERVE**
BEACH ACCESS
MOSS BEACH, CALIFORNIA

EXISTING CONDITIONS NOTES:

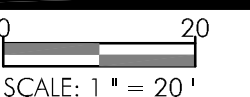
1. SURVEY OF EXISTING CONDITIONS PROVIDED BY WILSEY HAM, 2009. SURVEY TO BE EXPANDED AND GEOREFERENCED BY A LICENSED SURVEYOR PRIOR TO PRODUCTION OF FINAL CONSTRUCTION DOCUMENTS.
2. EXISTING BIOLOGICAL COMMUNITIES ADJACENT TO WORK TO BE ALIGNED WITH GEOREFERENCED SURVEY PRIOR TO PRODUCTION OF FINAL CONSTRUCTION DOCUMENTS. IMPACTS ASSOCIATED WITH TRAIL ALIGNMENT TO BE MINIMIZED.



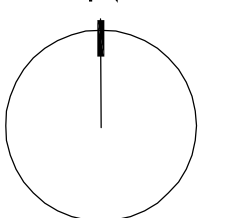
1 EXISTING CONDITIONS AND DEMOLITION PLAN
SCALE: 1" = 20'

Date	Issues And Revisions	No.
01/15/10	60% DRAFT CONSTRUCTION SET	

PROJECT #18054
DRAWN BY: ICM
CHECKED BY: GJS
ORIGINAL DRAWING SIZE: 24 X 36



SCALE: 1" = 20'



**EXISTING
CONDITIONS AND
DEMOLITION PLAN**

Sheet

**FITZGERALD
MARINE RESERVE
BEACH ACCESS**
MOSS BEACH, CALIFORNIA

GRADING NOTES

1. THE GRADING PLANS INDICATE FINISHED GRADE ELEVATIONS. REFER TO THE GRADING DETAILS FOR SUBGRADE SPECIFICATIONS.
2. SALVAGE TOPSOIL FROM ENTIRE AREA WITHIN THE LIMIT OF GRADING.
3. LOCATIONS OF STOCKPILE AREAS FOR TOPSOIL STORAGE AND HAUL ROADS SHALL BE DETERMINED BY THE WETLAND CONSULTANT.
4. NO GRADING SHALL OCCUR WITHIN THE DRIPLINE OF EXISTING TREES TO REMAIN. THE CONTRACTOR IS SOLELY RESPONSIBLE FOR ANY DAMAGE TO EXISTING TREES.

DRAINAGE LEGEND

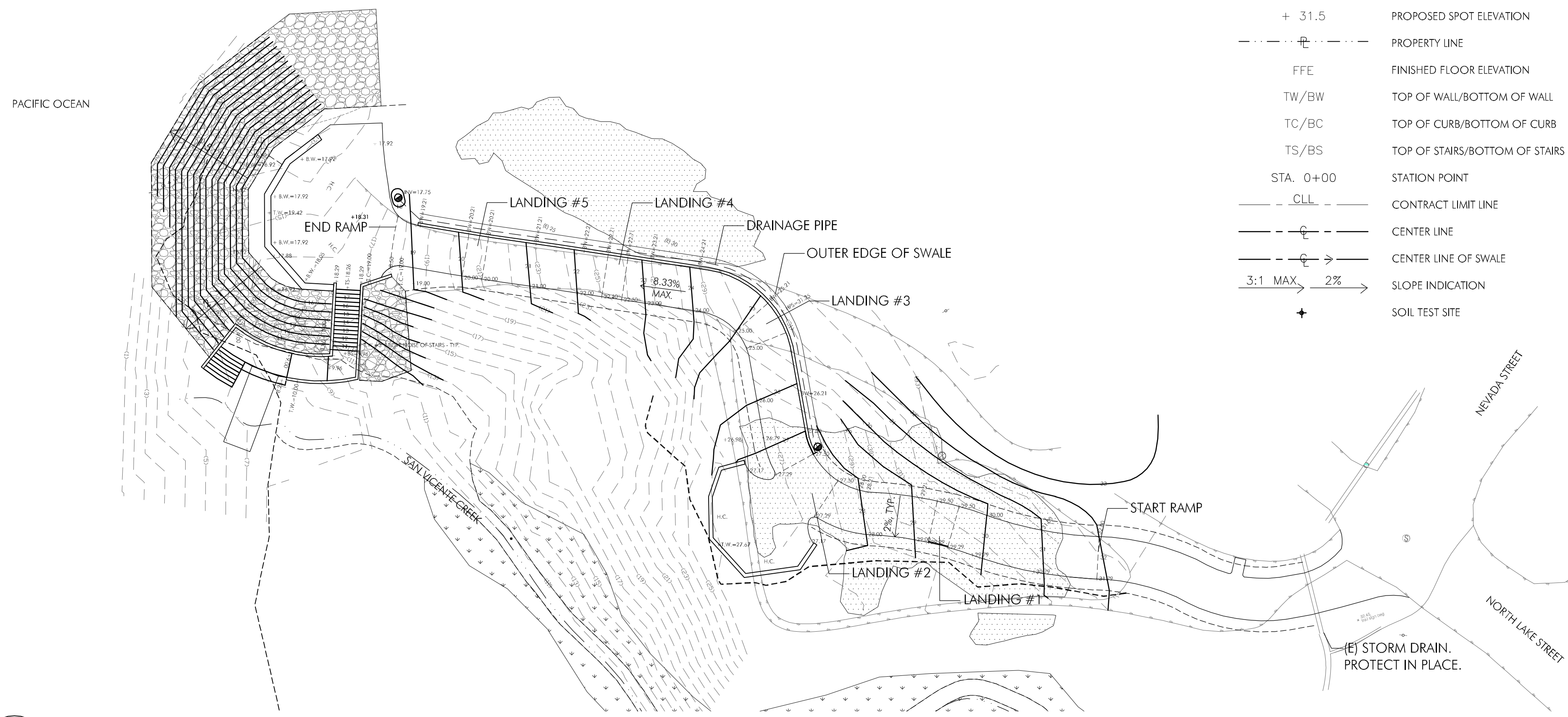
SYMBOL	DESCRIPTION
HPS	HIGH POINT OF SWALE
HP/LP	HIGH POINT/LOW POINT
TF/RE	TOP OF FRAME OR RIM ELEVATION
INV	INVERT ELEVATION
☐	PROPOSED CATCH BASIN
●	PROPOSED DRAIN INLET
●	PROPOSED MANHOLE
☐	PROPOSED AREA DRAIN

GENERAL LEGEND

SYMBOL	DESCRIPTION
----	25' RIPARIAN SETBACK LINE
----	HIGH TIDE LINE
----	ORDINARY HIGH WATER LINE
▨	(E) FRESHWATER WETLAND
▨	(E) STRAWBERRY

GRADING LEGEND

SYMBOL	DESCRIPTION
---	EXISTING CONTOUR LINE
—31—	PROPOSED CONTOUR LINE
---31.5---	GRADE BREAK
x (31.5)	EXISTING SPOT ELEVATION
+ 31.5	PROPOSED SPOT ELEVATION
---	PROPERTY LINE
FFE	FINISHED FLOOR ELEVATION
TW/BW	TOP OF WALL/BOTTOM OF WALL
TC/BC	TOP OF CURB/BOTTOM OF CURB
TS/BS	TOP OF STAIRS/BOTTOM OF STAIRS
STA. 0+00	STATION POINT
---	CONTRACT LIMIT LINE
---	CENTER LINE
---	CENTER LINE OF SWALE
3:1 MAX 2%	SLOPE INDICATION
+	SOIL TEST SITE



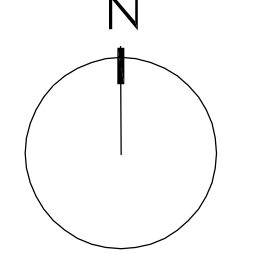
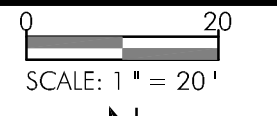
1 GRADING PLAN
SCALE: 1" = 20'

EROSION CONTROL PLAN WILL BE PROVIDED IN 90% SUBMITTAL

2 EROSION CONTROL PLAN
SCALE: 1" = 20'

Date	Issues And Revisions	No.
01/15/10	60% DRAFT CONSTRUCTION SET	

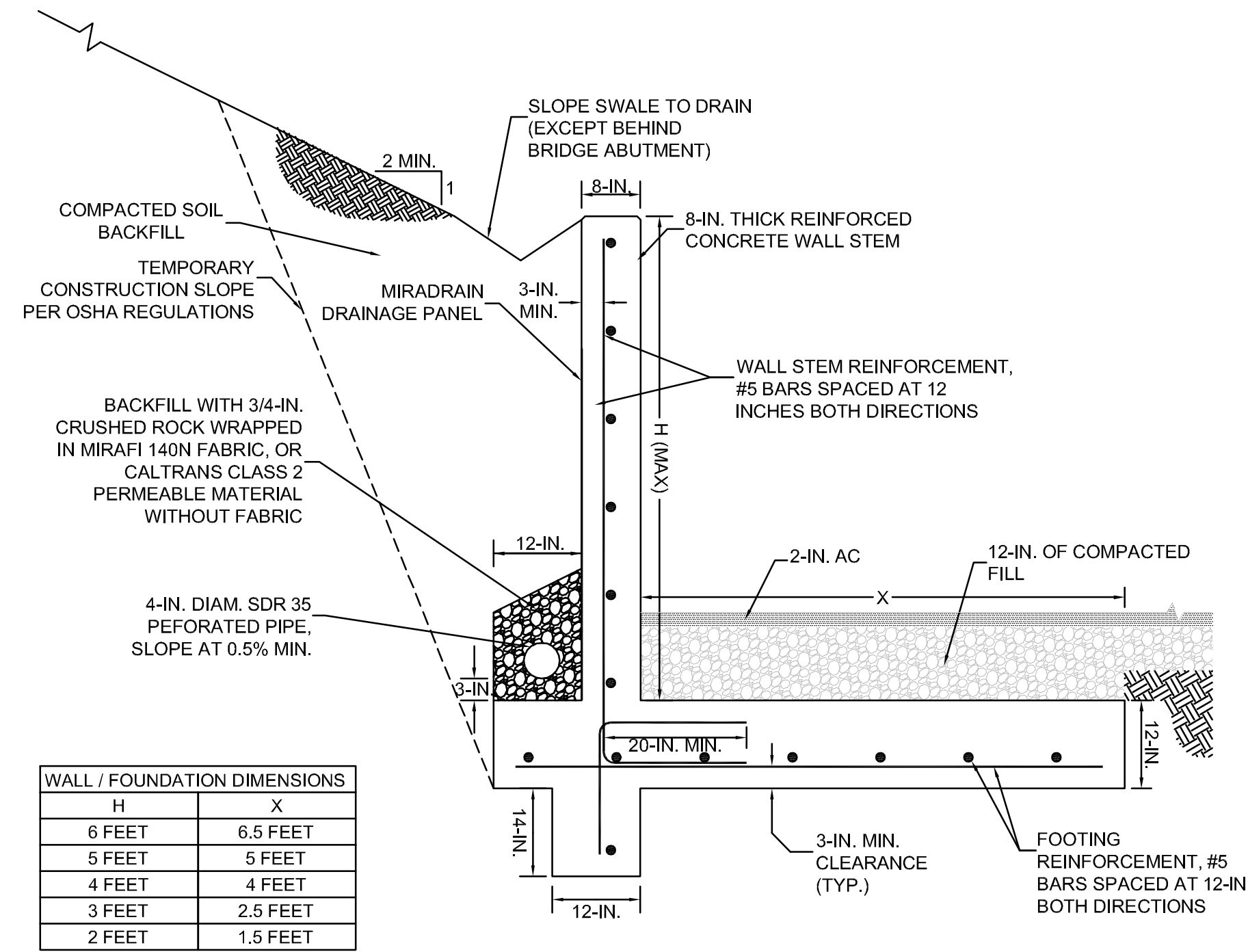
PROJECT #18054
DRAWN BY: ICM
CHECKED BY: GJS
ORIGINAL DRAWING SIZE: 24 X 36



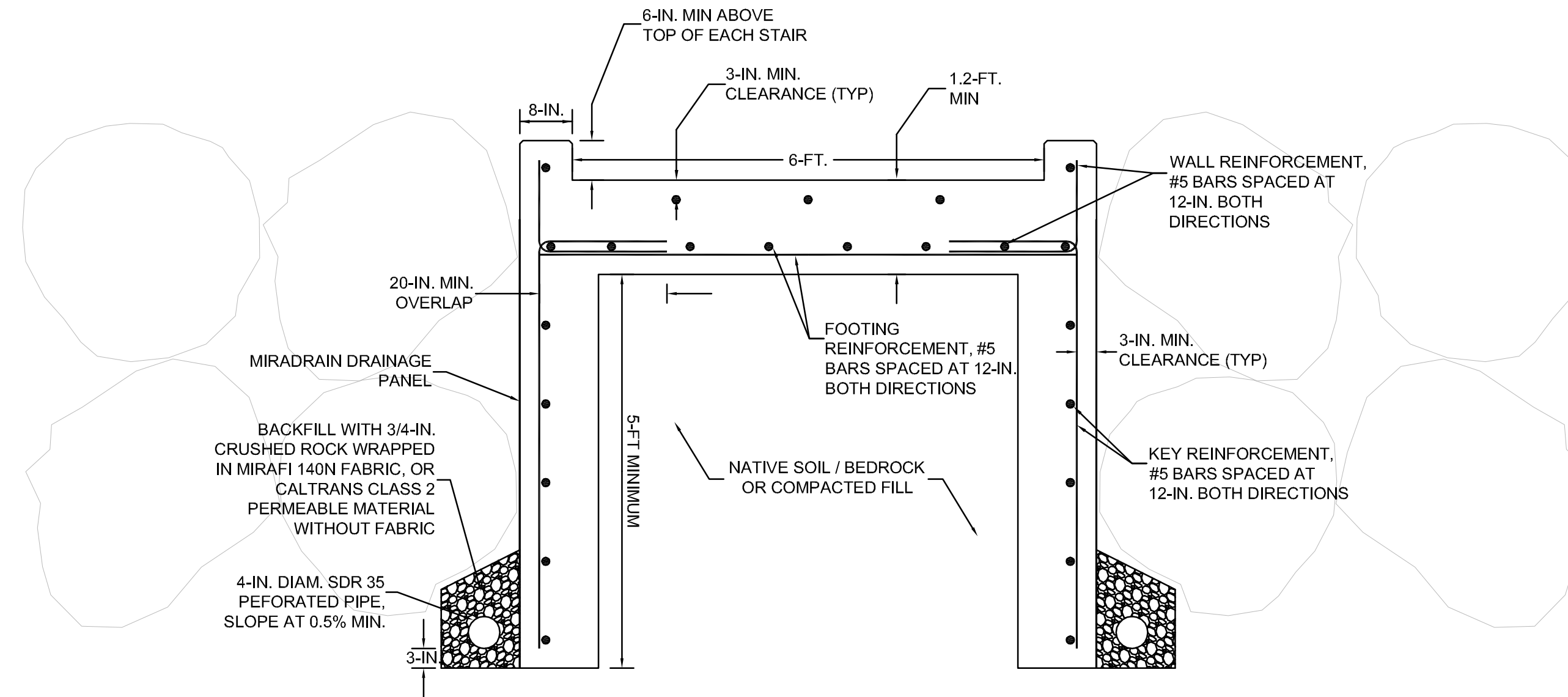
**GRADING &
EROSION
CONTROL PLAN**

Sheet

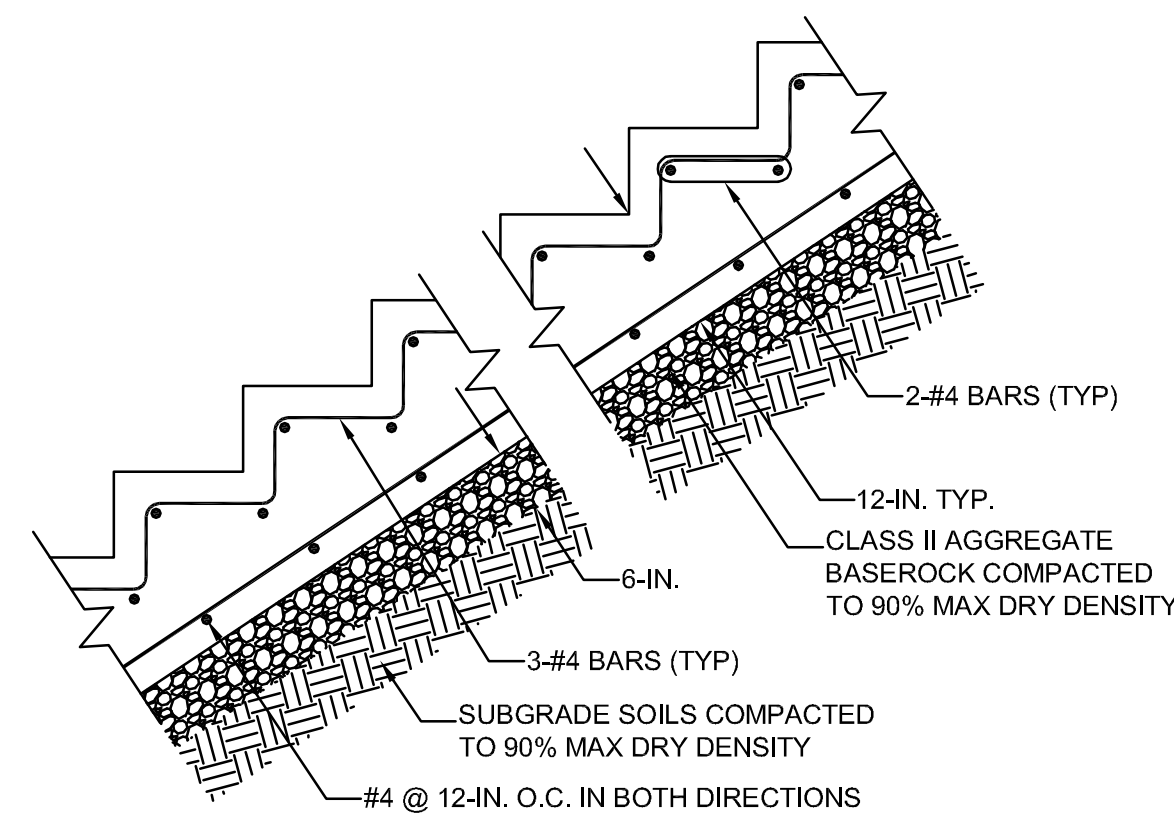
L-4



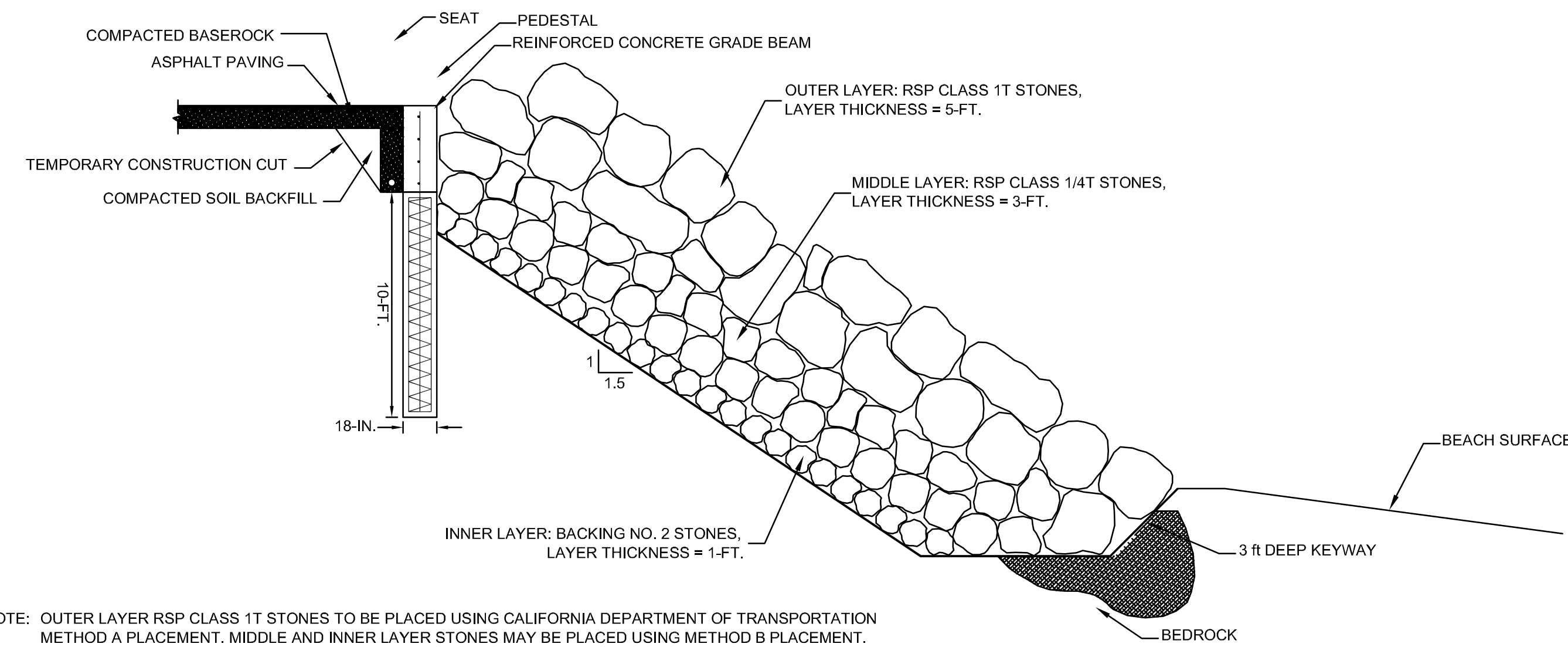
1 ADA PATH WALL DETAIL
NOT-TO-SCALE



2 STAIRCASE WALL DETAIL
NOT-TO-SCALE

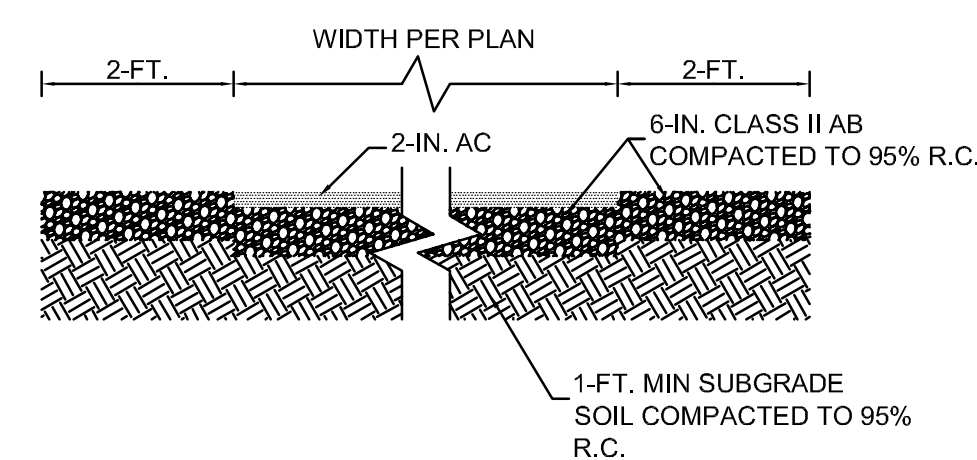


3 TYPICAL STAIRCASE SECTION
NOT-TO-SCALE

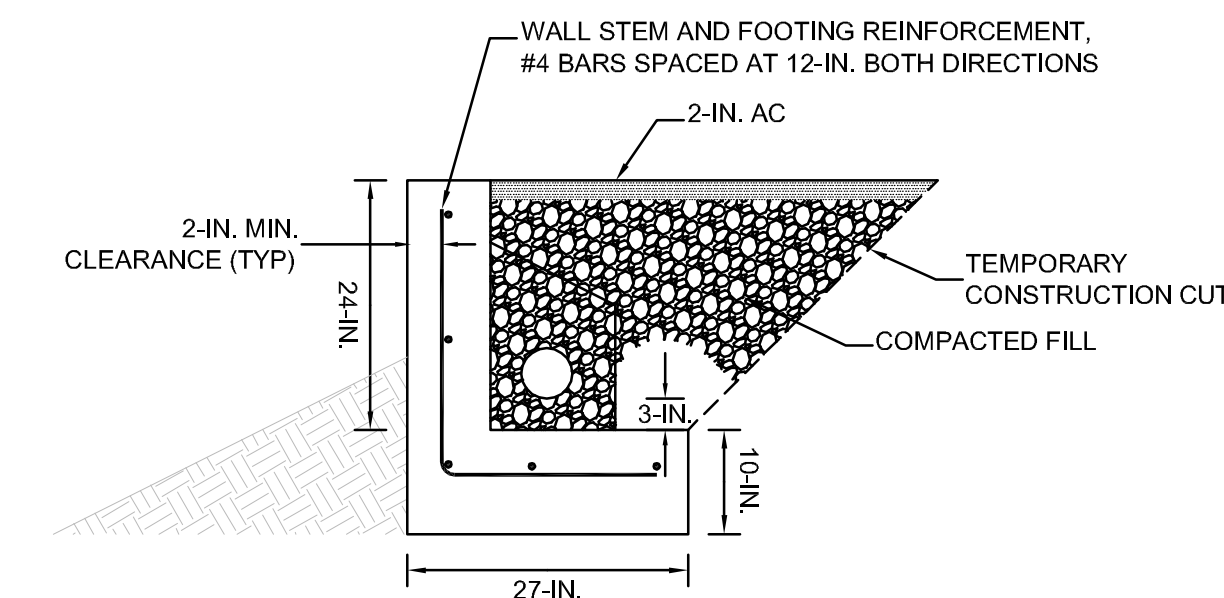


NOTE: OUTER LAYER RSP CLASS 1T STONES TO BE PLACED USING CALIFORNIA DEPARTMENT OF TRANSPORTATION METHOD A PLACEMENT. MIDDLE AND INNER LAYER STONES MAY BE PLACED USING METHOD B PLACEMENT.

4 ROCK SLOPE SHORE PROTECTION SYSTEM WITH DRILLED PIER SEAT WALL
NOT-TO-SCALE



5 ADA PATH / OVERLOOK PAVING DETAIL
NOT-TO-SCALE



6 SECONDARY OVERLOOK RETAINING WALL
NOT-TO-SCALE

01/15/10 60% DRAFT CONSTRUCTION SET
Date Issues And Revisions No.

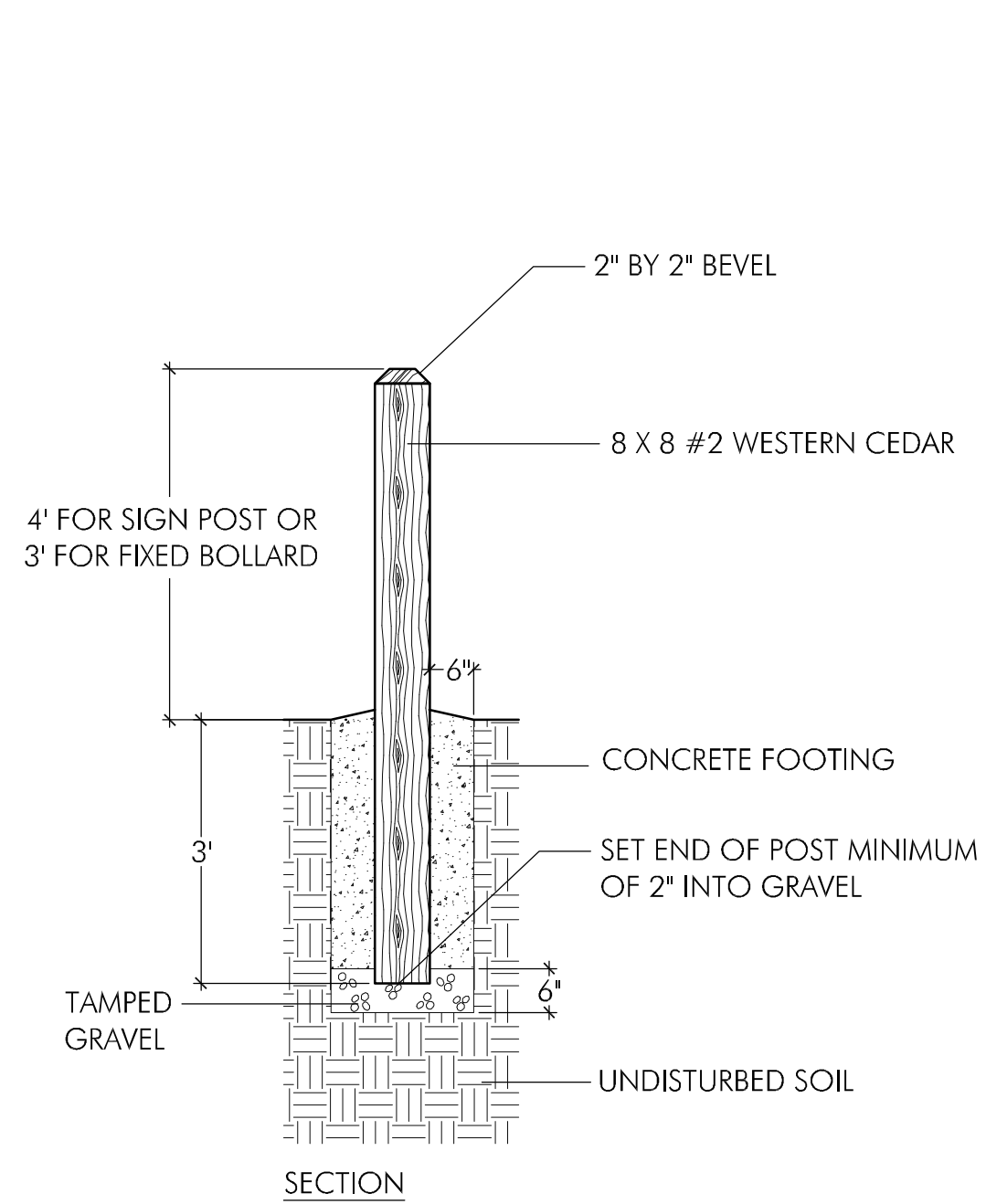
PROJECT #18054
DRAWN BY:
CHECKED BY:
ORIGINAL DRAWING SIZE: 24 X 36

SCALE: AS INDICATED

SITE & STRUCTURAL
DETAILS

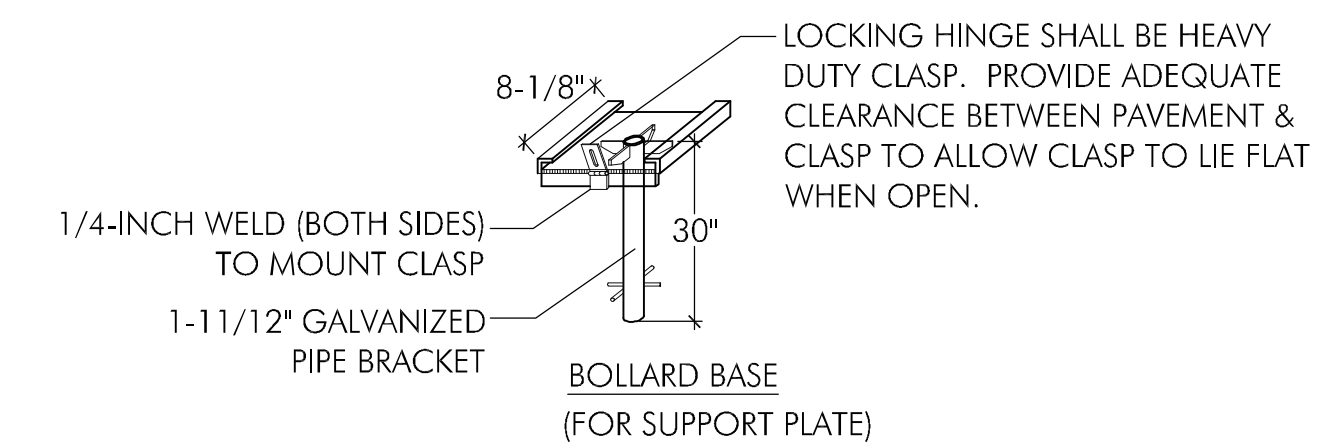
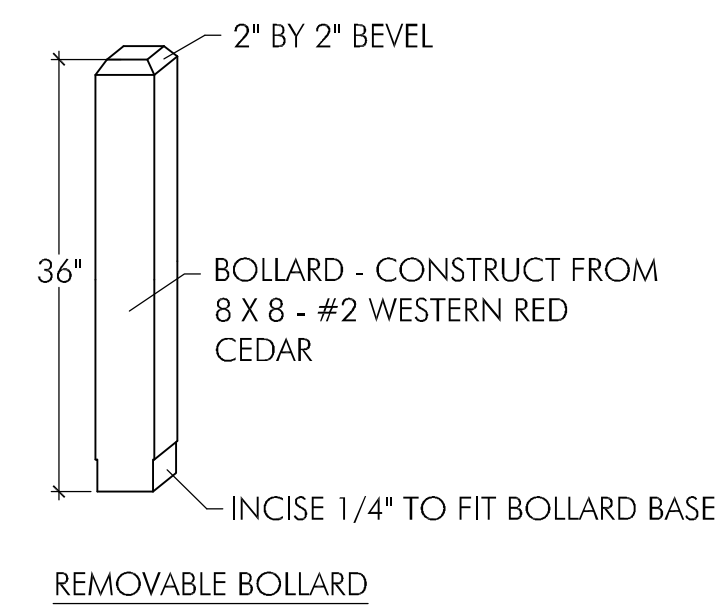
Sheet

**FITZGERALD
MARINE RESERVE**
BEACH ACCESS
MOSS BEACH, CALIFORNIA



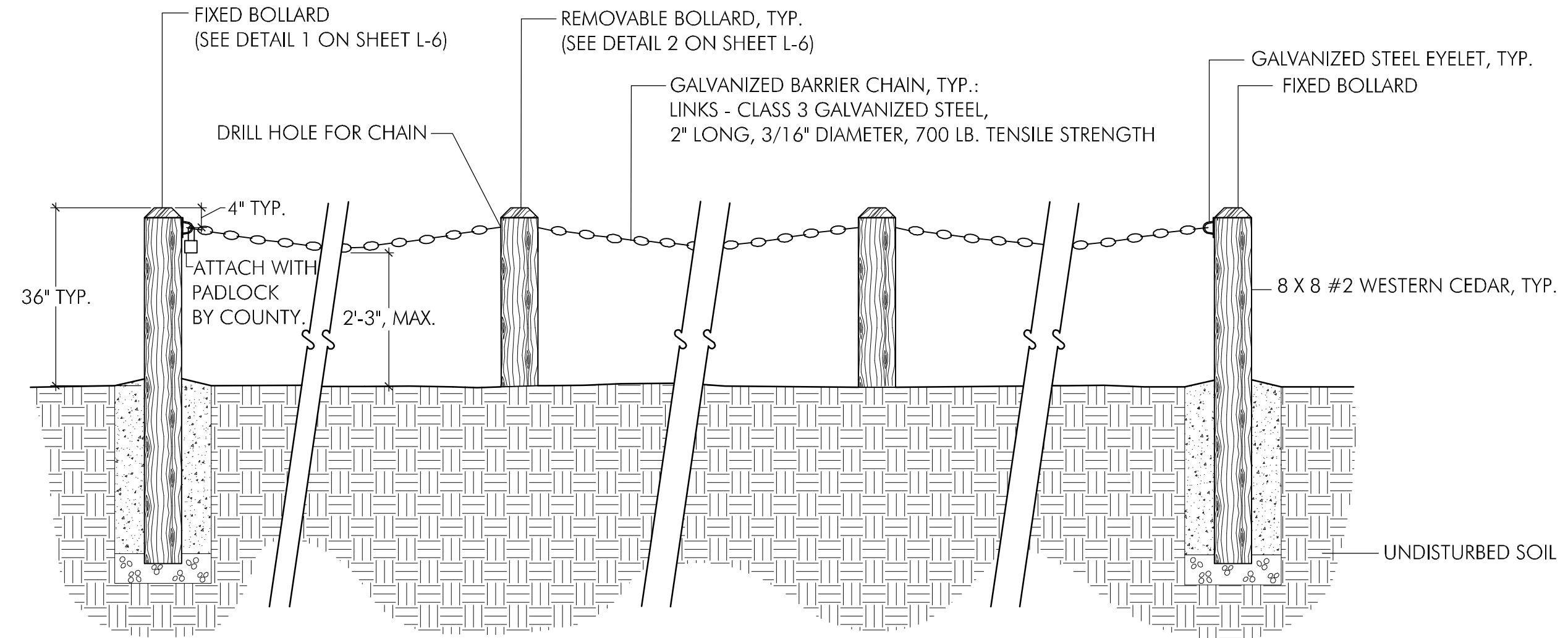
NOTE: SIGN PROVIDED AND INSTALLED BY COUNTY.

1 SIGN POST / FIXED BOLLARD
NOT TO SCALE



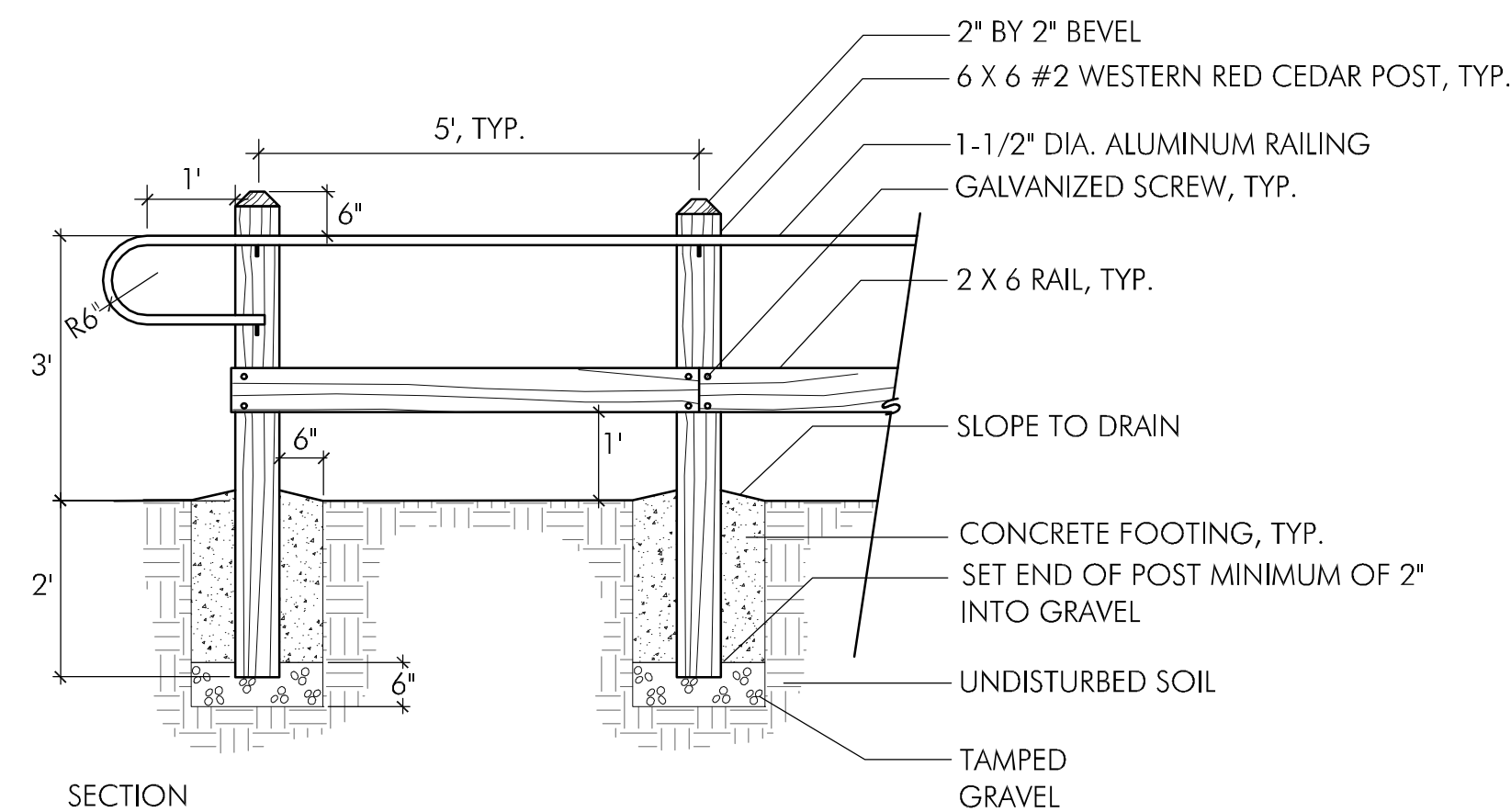
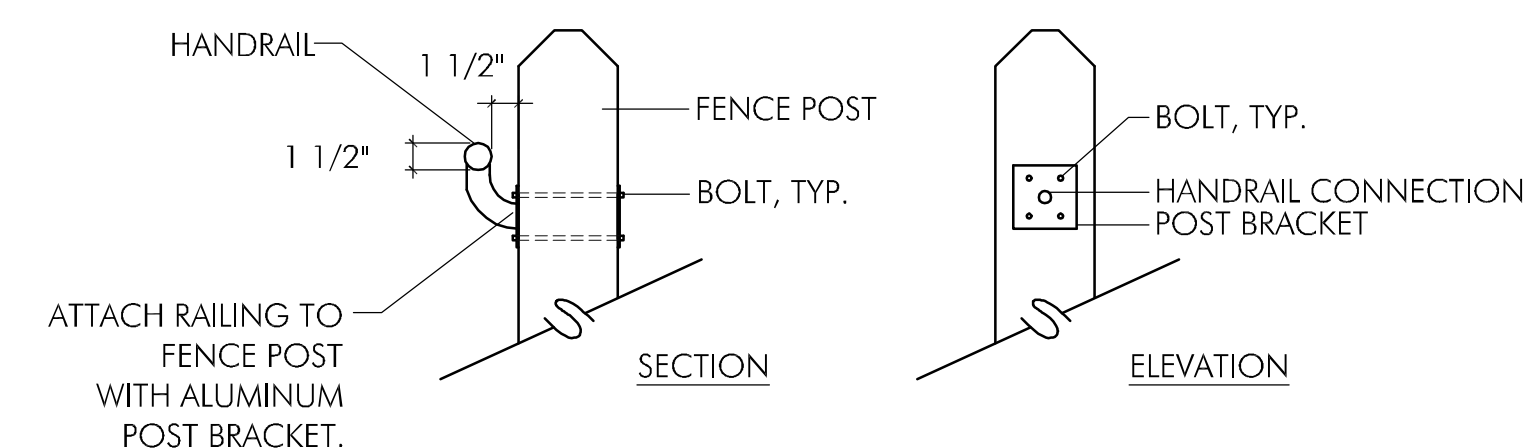
NOTES:
1. ALL PLATE MATERIALS SHALL BE 3/8\"/>

2 REMOVABLE BOLLARD
NOT TO SCALE

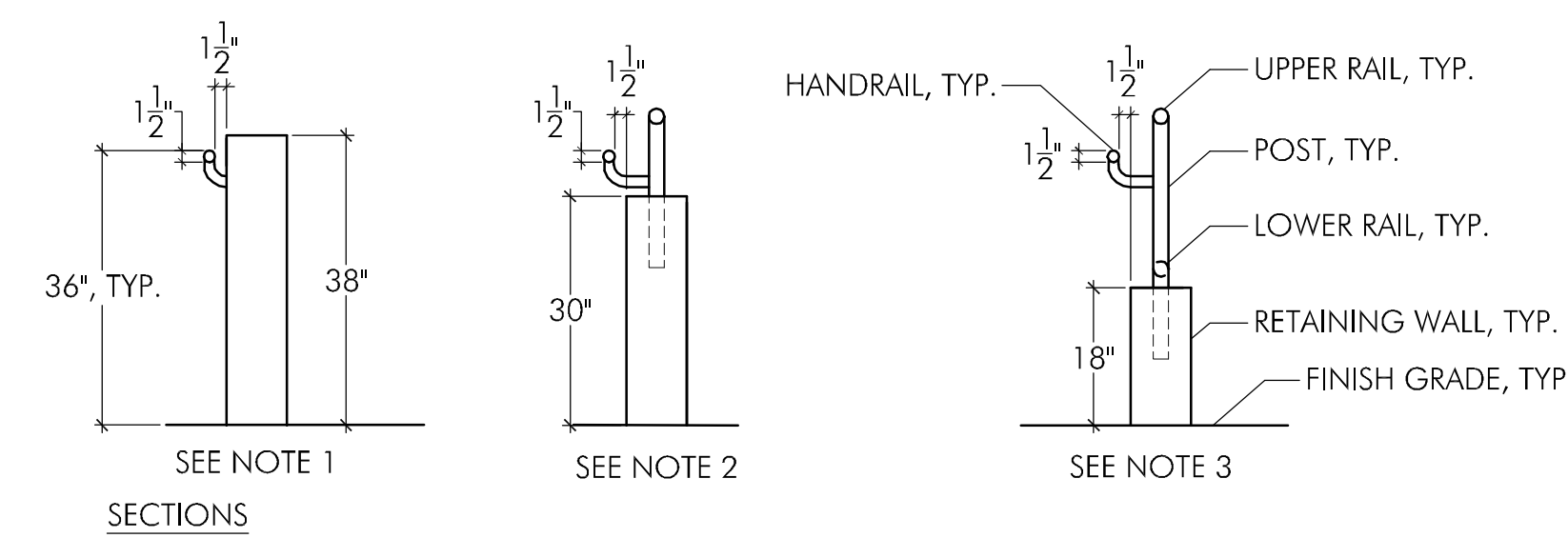


NOTES:
1. SEE SHEET L-3 FOR BOLLARD SPACING AND LAYOUT.

3 BOLLARDS AND CHAIN
NOT TO SCALE

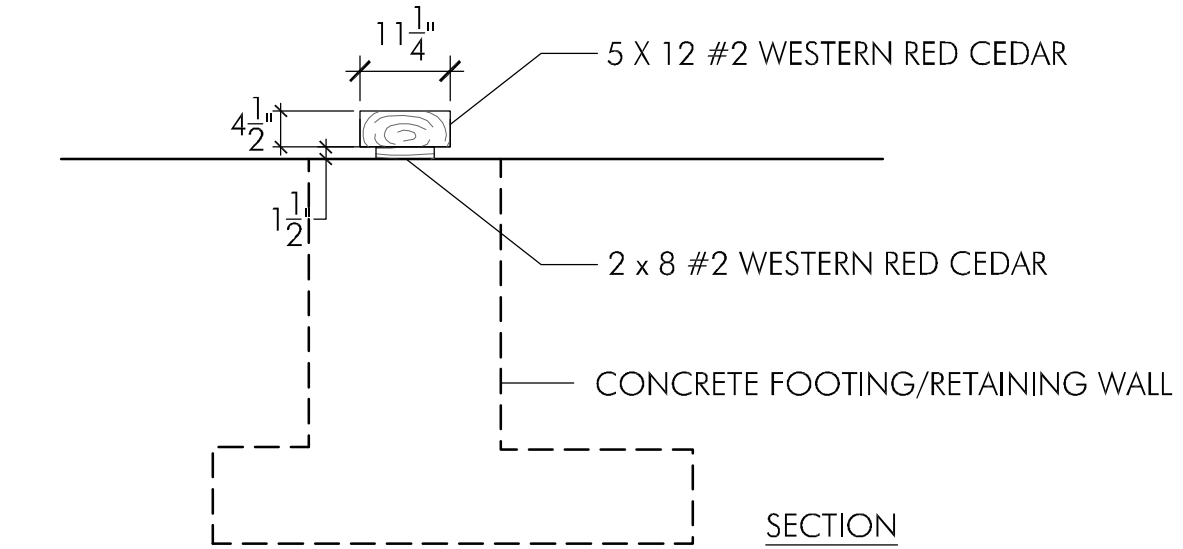


4 FENCE WITH HANDRAIL
NOT TO SCALE

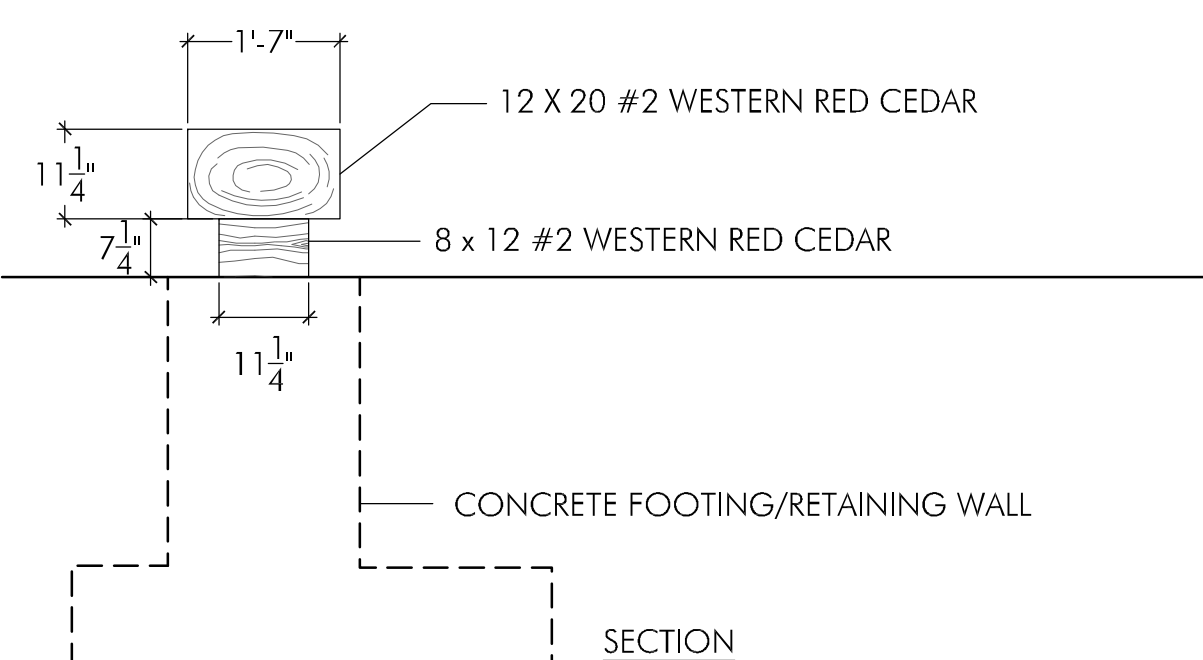


NOTES:
1. ATTACH HANDRAIL TO WALL WHEN WALL IS 38\"/>

5 RETAINING WALL HANDRAIL
NOT TO SCALE



6 WOOD CURB
NOT TO SCALE



7 PEDESTAL BENCH
NOT TO SCALE

8 TRASH RECEPTACLE
NOT TO SCALE

DETAIL TO BE INCLUDED IN 90% SUBMITTAL

MAKE: BEARSAVER
MODEL: HB1G-P

Date	Issues And Revisions	No.
01/15/10	60% DRAFT CONSTRUCTION SET	

PROJECT #18054
DRAWN BY: ICM
CHECKED BY: GJS
ORIGINAL DRAWING SIZE: 24 X 36

SCALE: AS INDICATED

SITE DETAILS

Sheet

L-6